



The Power of Conversation: How Parent Cafés Support Early Childhood Success

Introductions

Suzan Gage
Executive Director



Matt Bonner
Administrative Director
& Parent Café Host



Shallum Winston
Early Childhood Care
Coordination-Team Lead
& Parent Café Host




Glen Kaminski
Parent Café Host & Café
Participant



What is a Parent Café?


Parent Cafés were first developed in 2007 by parent leaders from Strengthening Families Illinois as a parent-to-parent way to build the Strengthening Families™ Protective Factors within families.



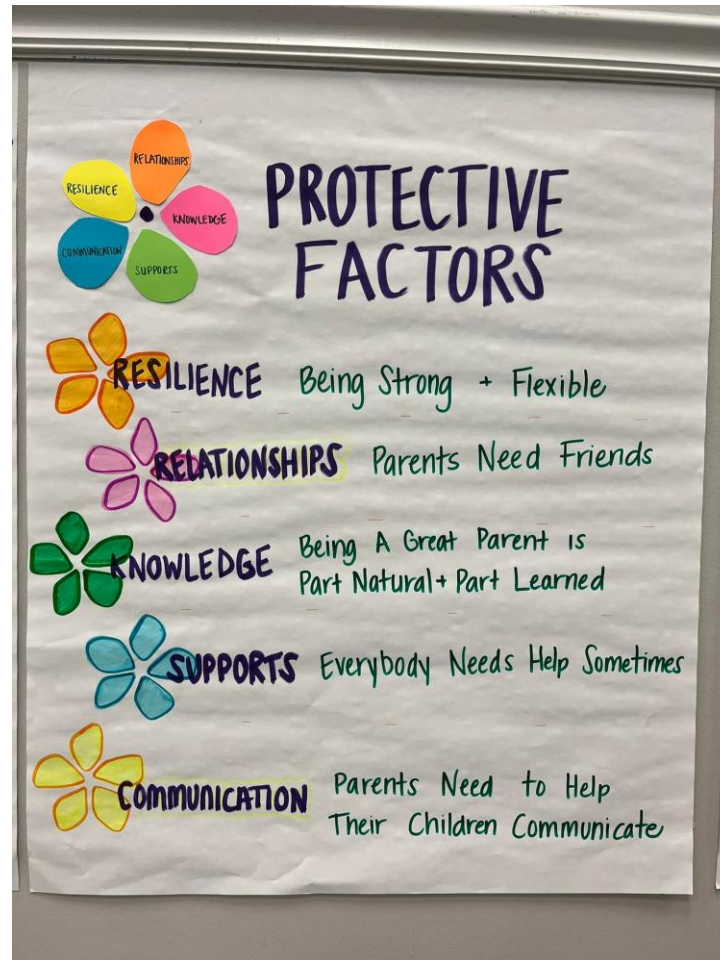
In Parent Cafés, every voice is valued and everyone can both learn and lead.



Parent Cafés are physically and emotionally safe spaces where people talk and listen to each other on topics that matter to them, such as the challenges and victories of raising a family, enhancing well-being, or being involved in the recovery process of someone they love.

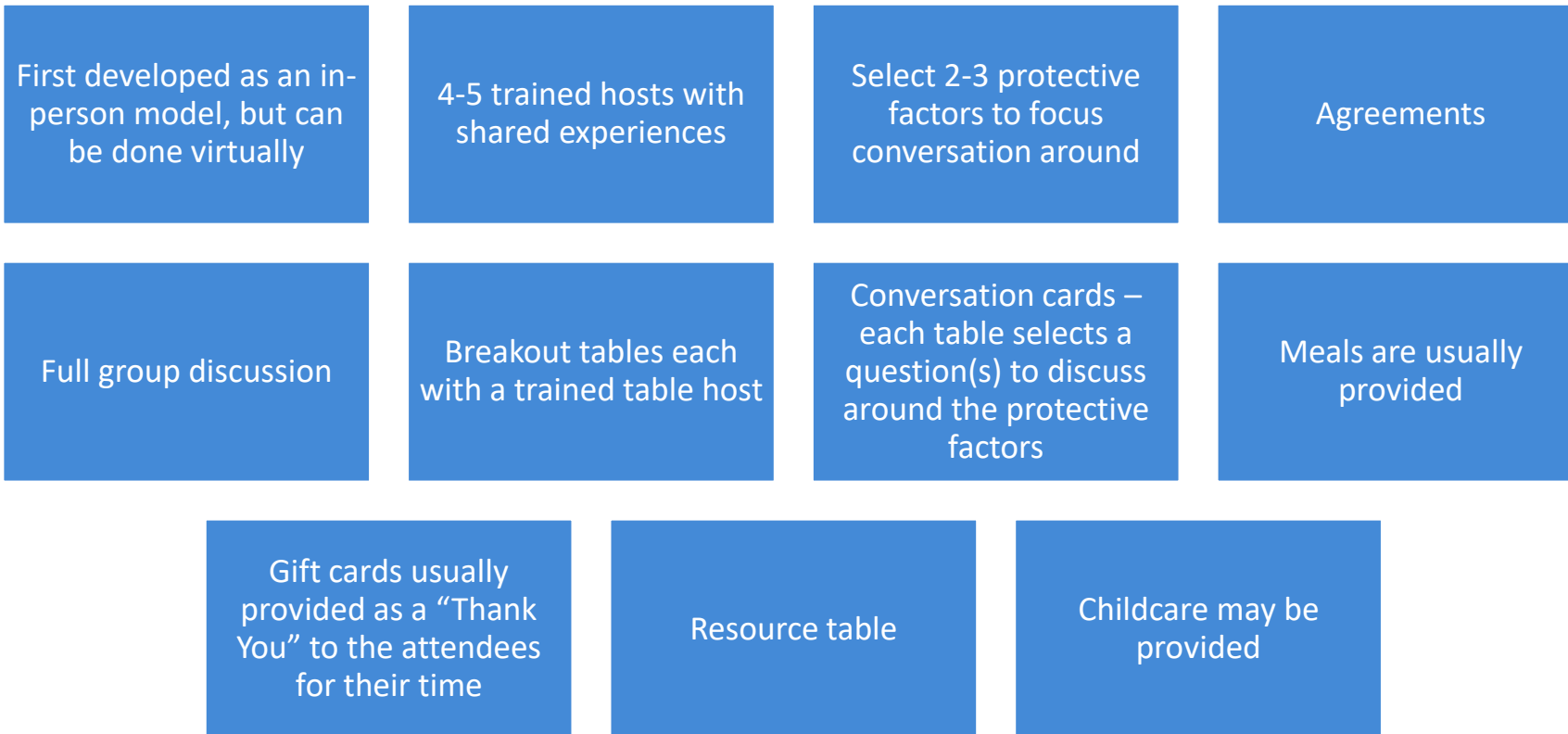


Through individual deep self-reflection and peer-to-peer learning, participants explore their strengths, learn about the Protective Factors, and create strategies from their own wisdom and experiences to strengthen their families.



Protective Factors

Parent Café Components

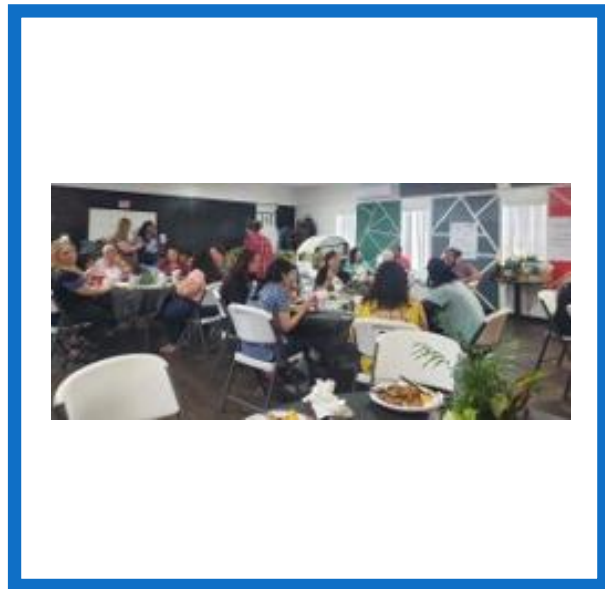
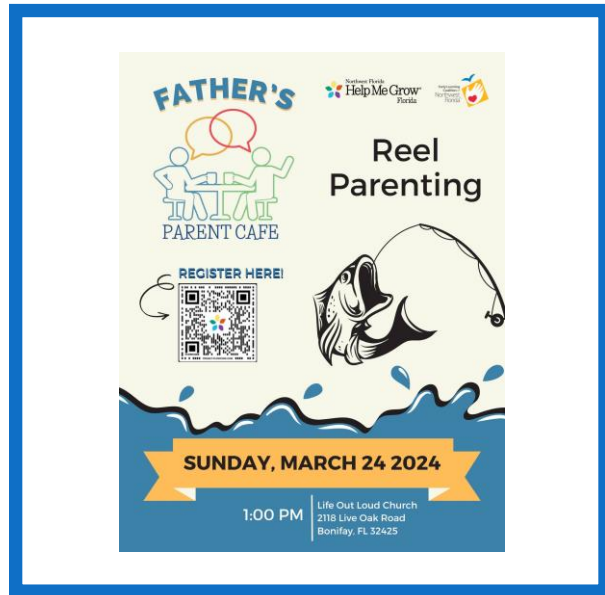




Conversation Cards



The Agreements



Ways ELCNWF Has Implemented Parent Cafés

Community Partner-Hosted Sites

Dad's Cafés

Childcare Provider Parent Engagement Night

ELCNWF Staff Development Session

Parent Testimonial



Contact Information

Tami Valdez

Community Development and Special Programs Director

P: 850.747.5400 x134 C: 850.625.8882

E: tami.valdez@elcnwf.org

Charron Wells

Child Services Special Programs Manager

P: 850.747.5400 x 122

C: 850.866.6202

E: charron.wells@elcnwf.org

