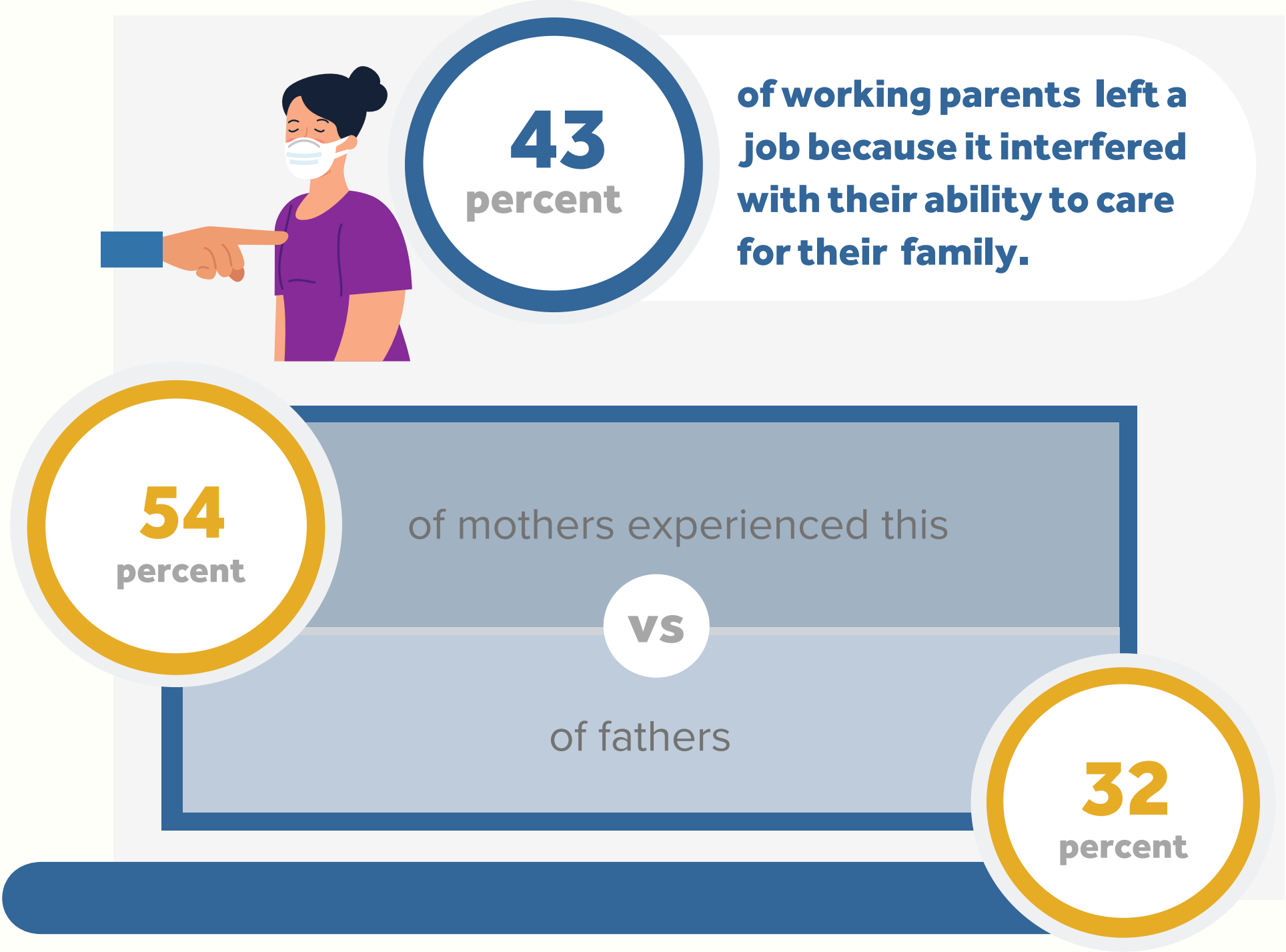


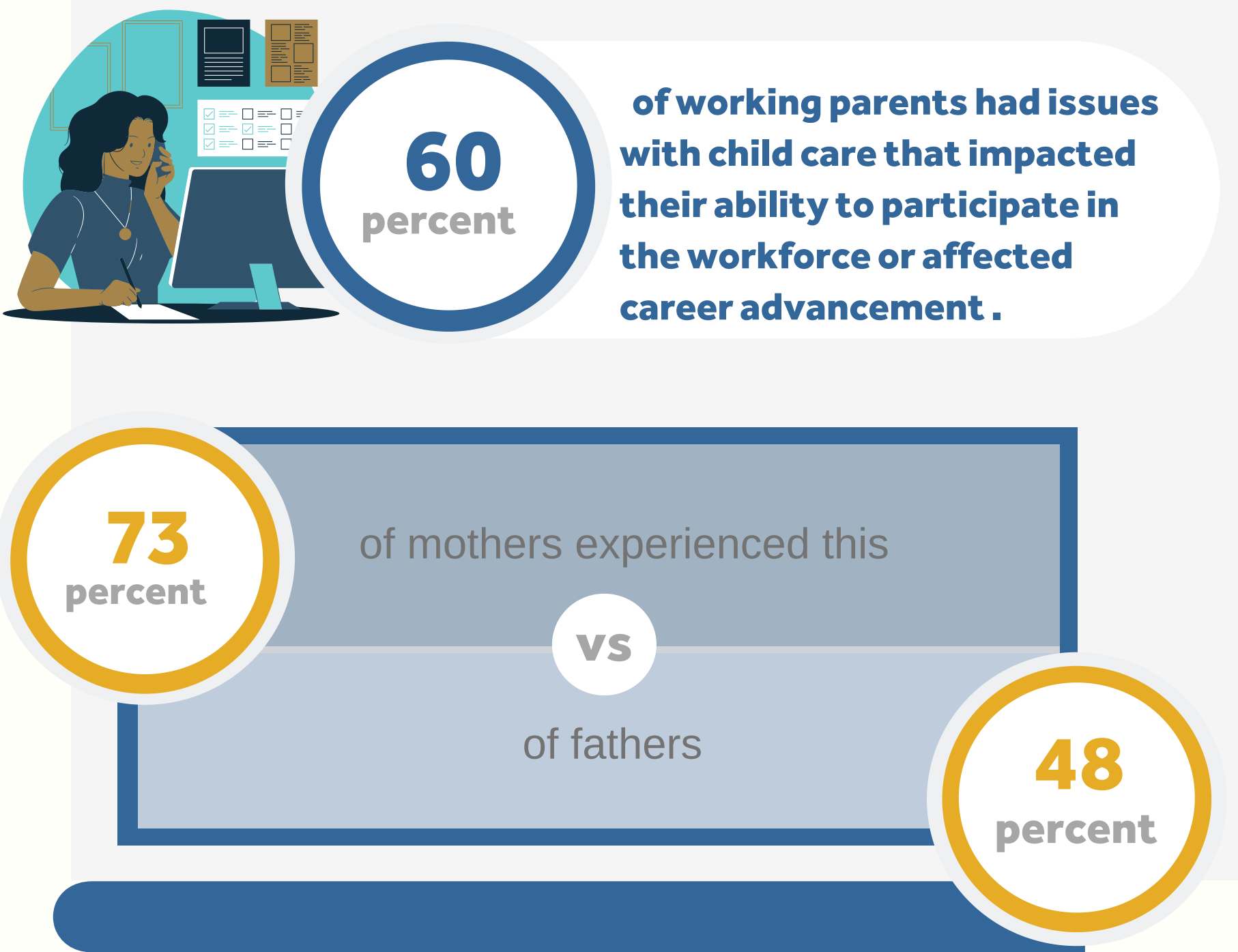
FINDING #1

Child care issues impact employment for many Florida families, especially impacting working mothers.



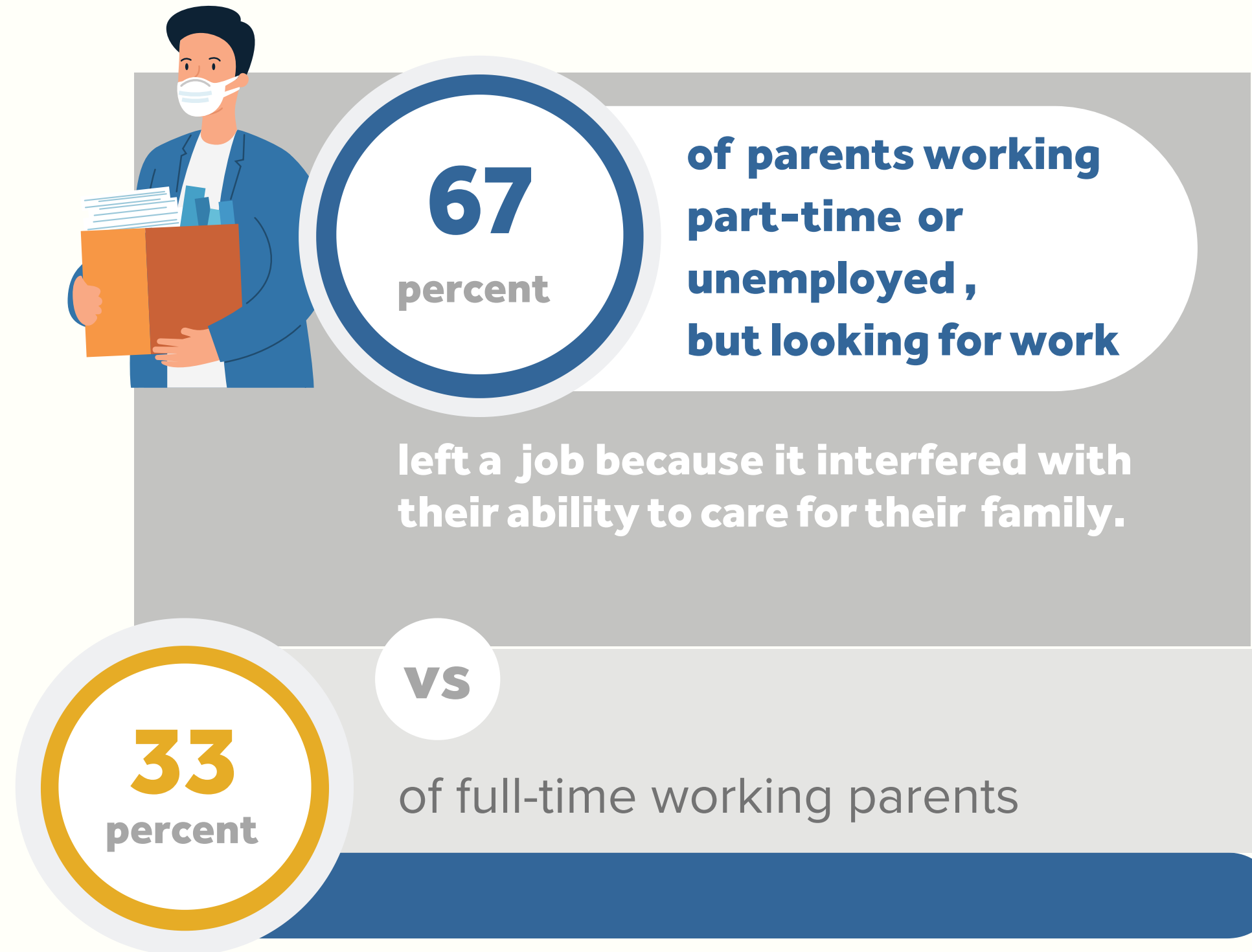
FINDING #1

Child care issues impact employment for many Florida families, especially impacting working mothers.



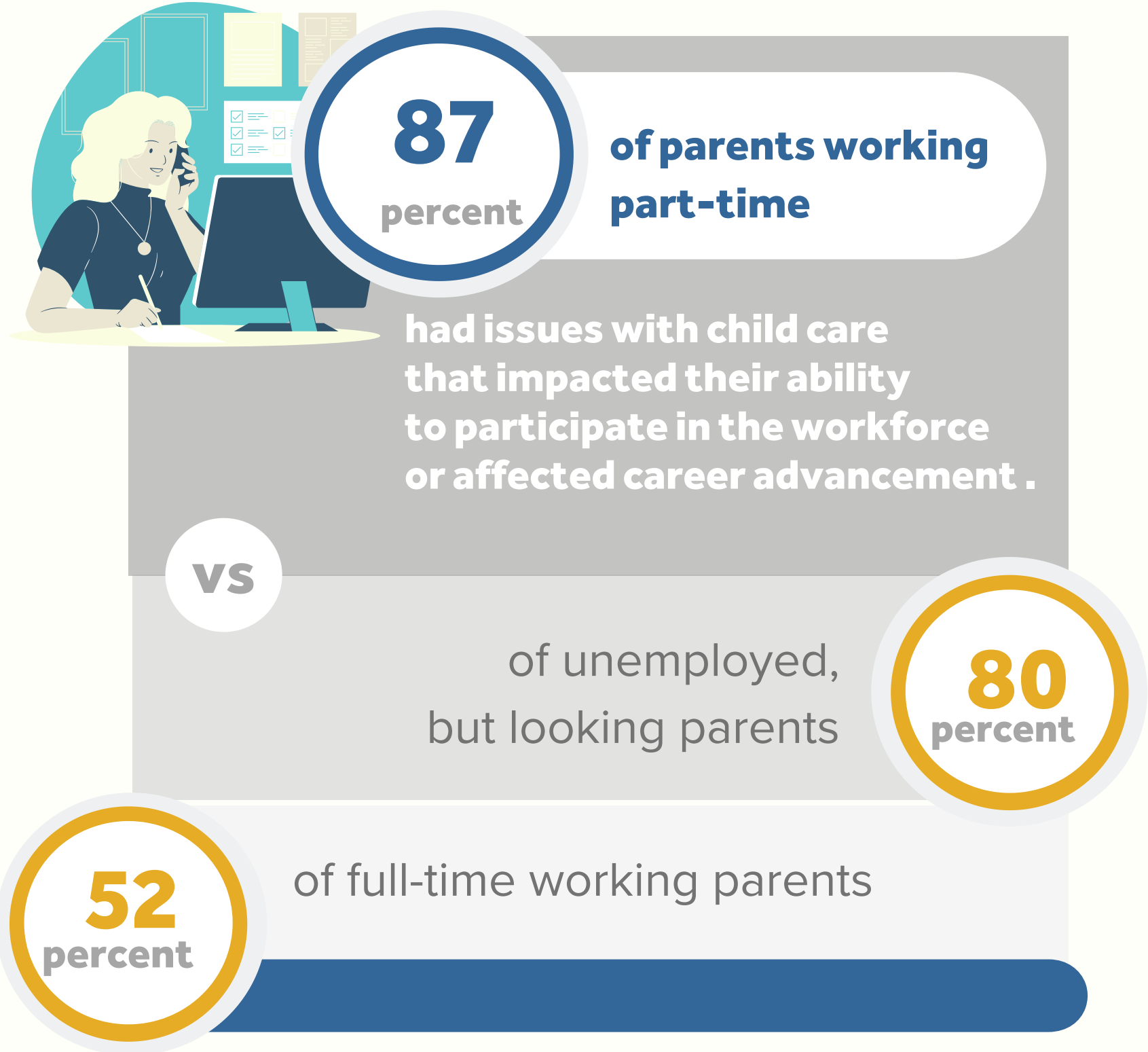
FINDING #2

Part-time employees are more likely to have child care issues impact their employment and have less access to benefits.



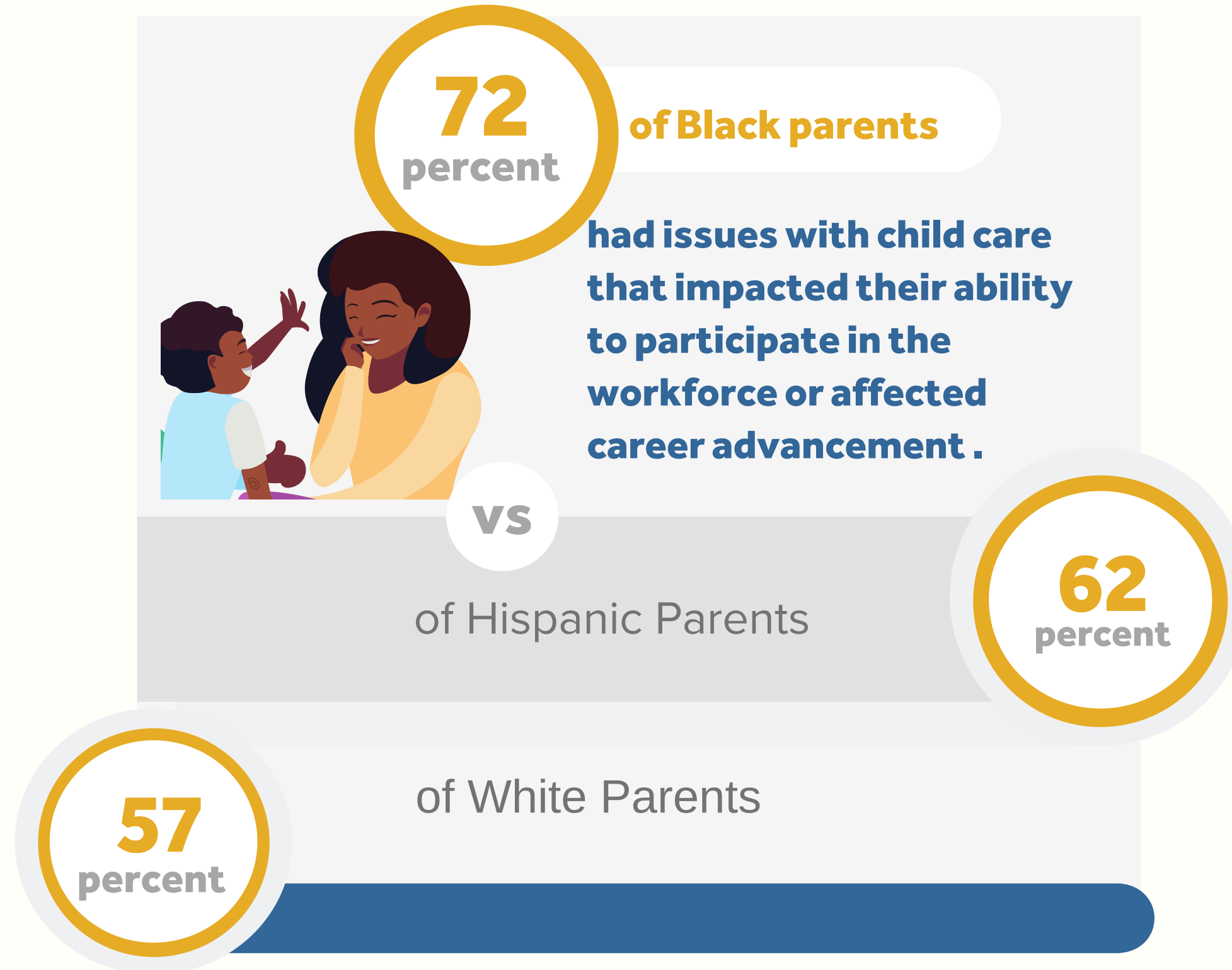
FINDING #2

Part-time employees are more likely to have child care issues impact their employment and have less access to benefits.



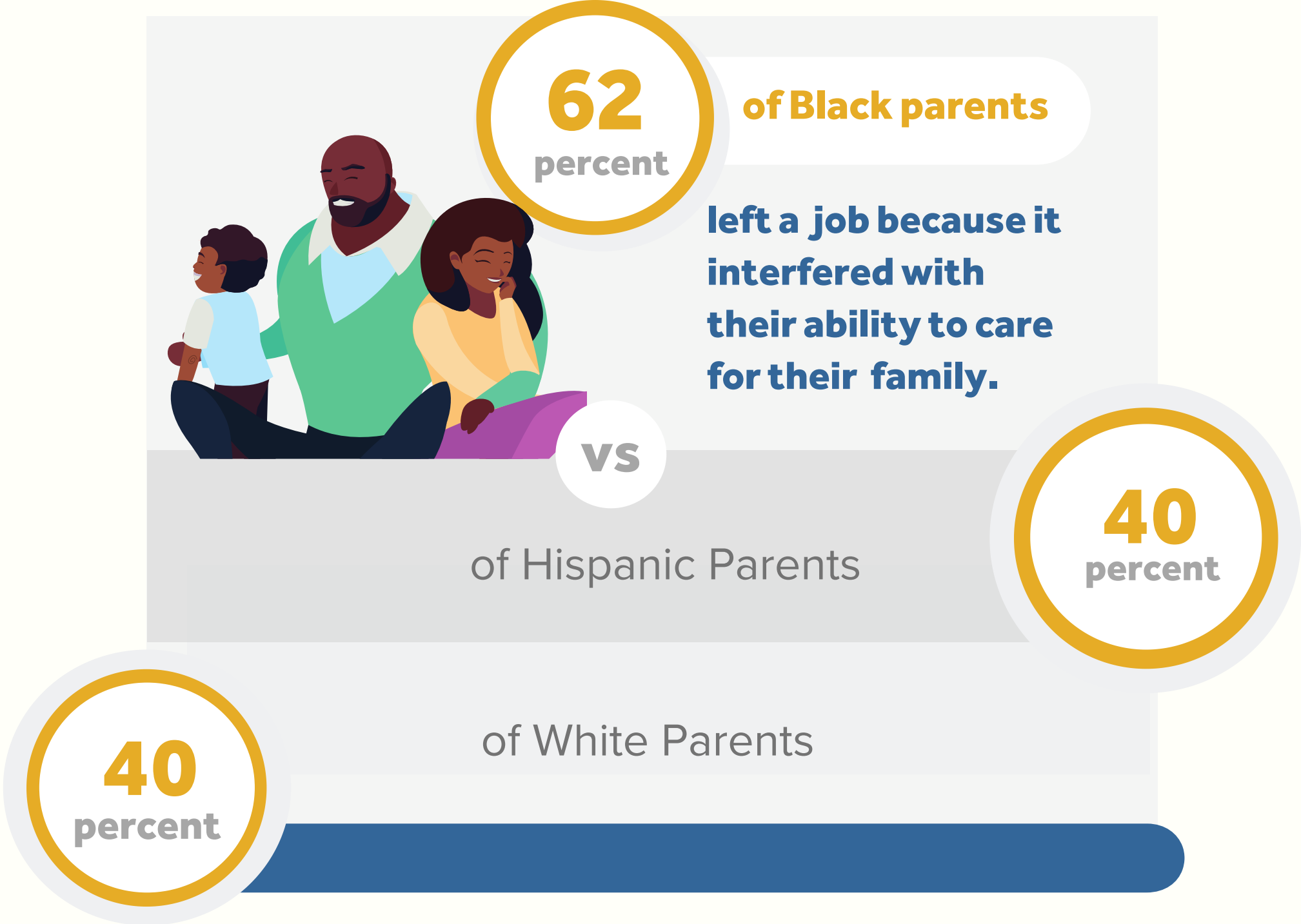
FINDING #3

Child care issues have disproportionately impacted Black and Hispanic parents' ability to work.



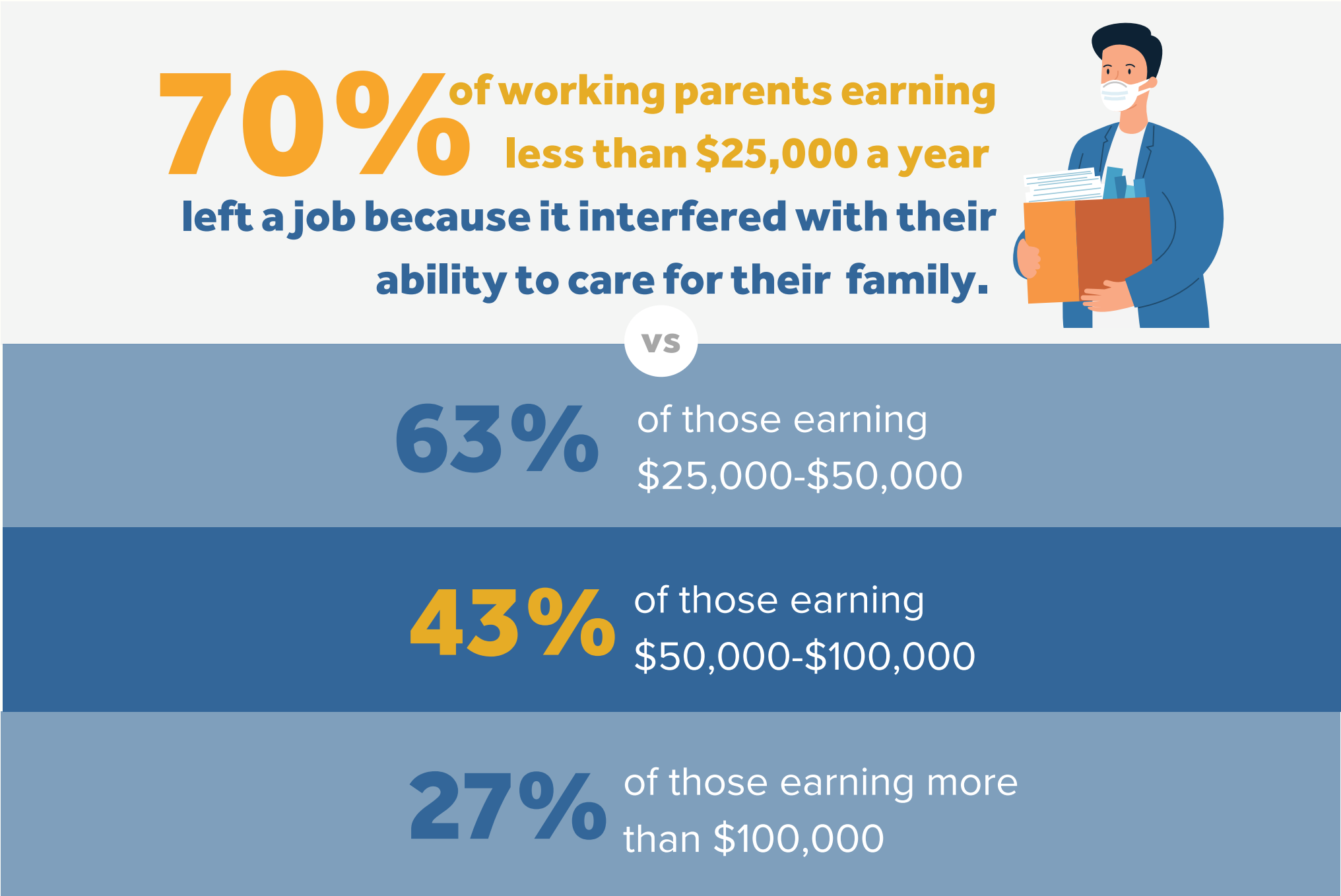
FINDING #3

Child care issues have disproportionately impacted Black and Hispanic parents' ability to work.



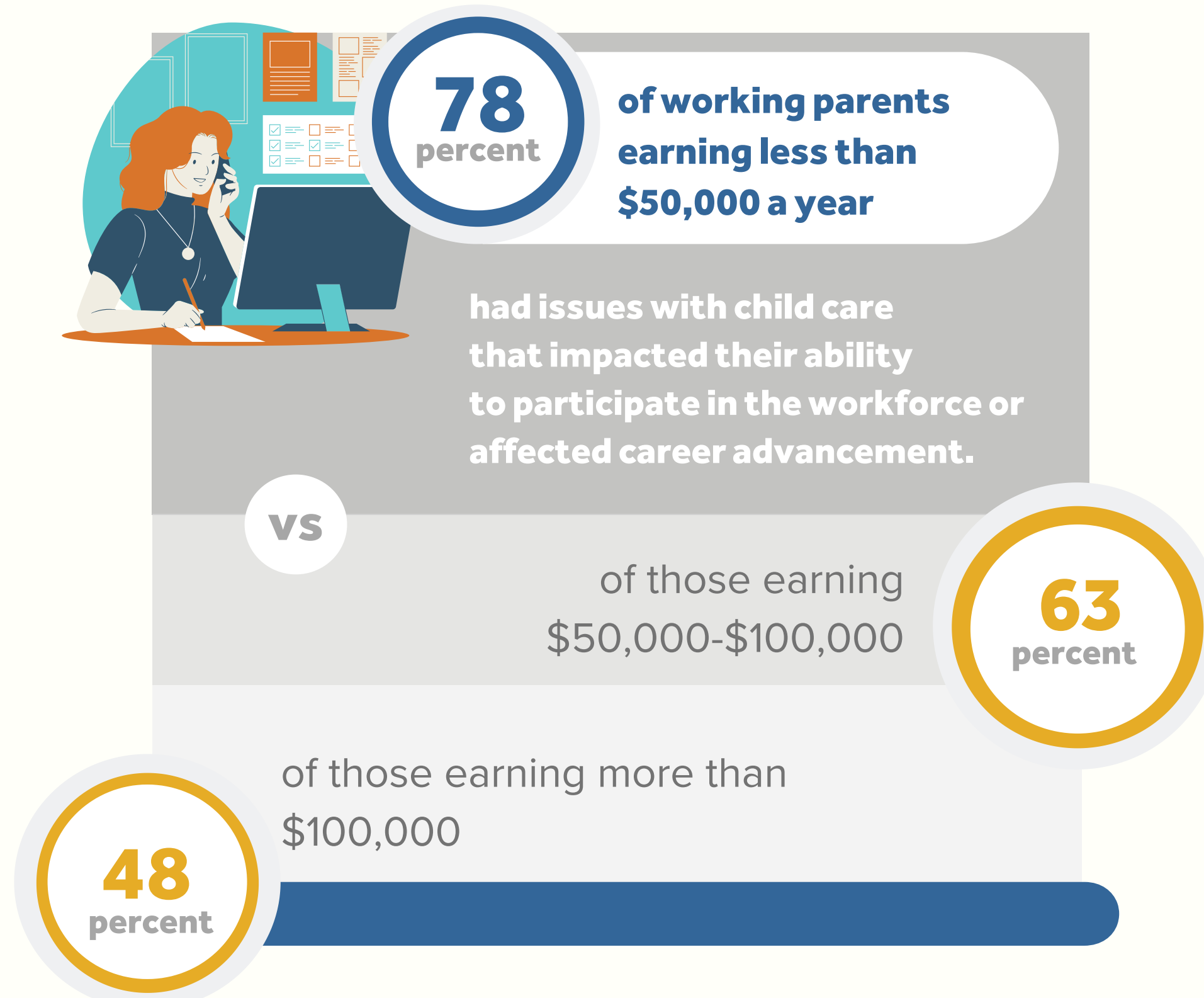
FINDING #4

Child care issues have disproportionately impacted low-income parents' ability to work.



FINDING #4

Child care issues have disproportionately impacted low-income parents' ability to work.



FINDING #5

Paid time off, flexibility, insurance, and child care stipends rated as the most desired benefits by working parents.

Respondents were asked

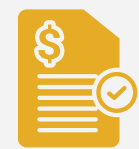
which parent/child-related benefits or supports would:

PROMOTE PRODUCTIVITY



#1

Flexibility



#2

Paid Time Off



#3

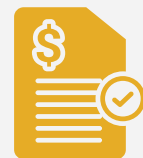
Backup Child Care Assistance



#4

On-site Child Care

BE MOST VALUABLE



#1

Paid Time Off



#2

Paid Family Leave



#3

Flexibility



#4

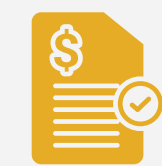
Health Insurance

INSPIRE LOYALTY



#1

Health Insurance



#2

Paid Time Off



#3

Flexibility

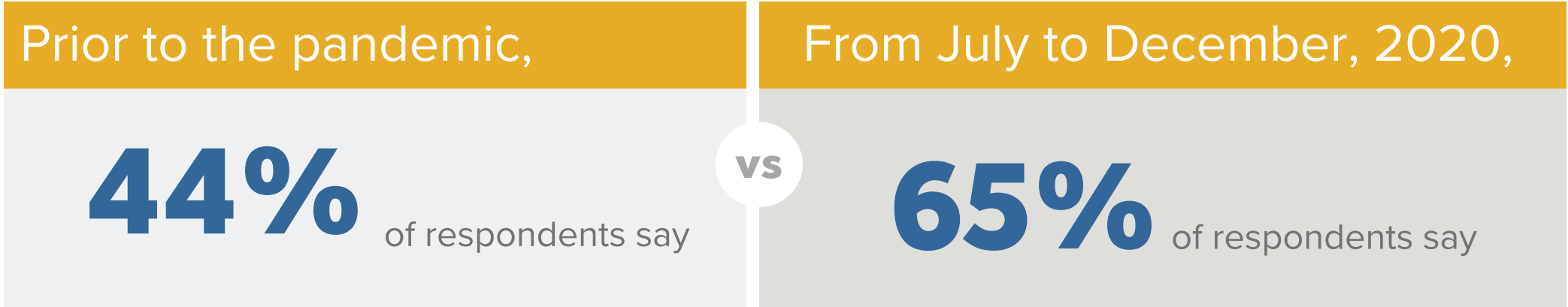


#4

Paid Family Leave

FINDING #6

COVID-19 has amplified the challenges of child care and employment alike – and has done so consistently among employee types.



child care issues caused at least one productivity-related issue at work

